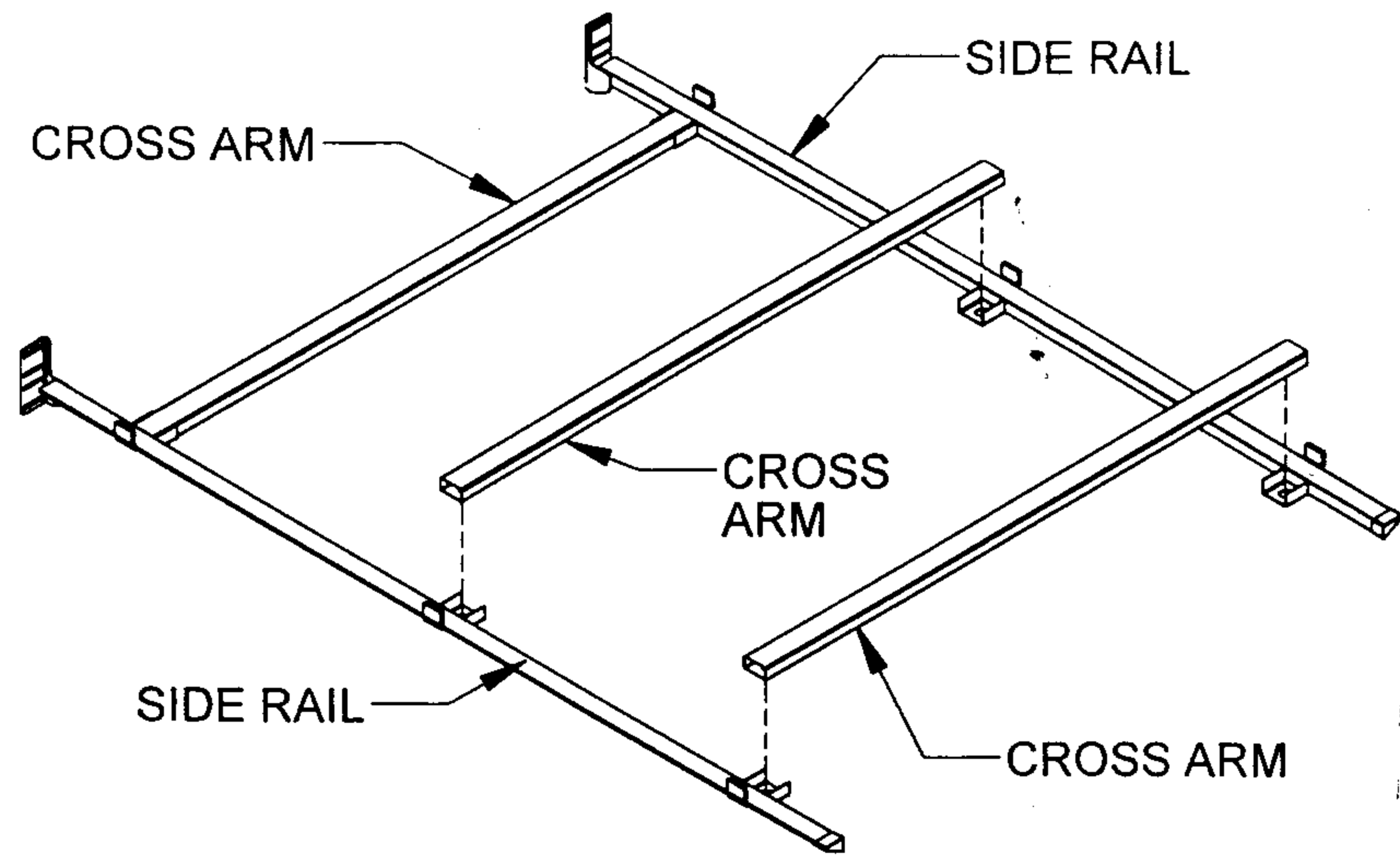


THE EDGE BED FRAME ASSEMBLY INSTRUCTIONS

Figure 1



Step 1 Slide CROSS ARMS in place between SIDE RAILS as shown in Figure 1. *Note: Threaded holes should be underneath.*

Step 2 Screw LEGS into threaded holes of each CROSS ARM and tighten securely by hand. Tap ROLLERS into each LEG. See Figure 2. *Note: LOCKING ROLLERS should be positioned at each corner of the bed frame as shown in Figure 3.*

Figure 2

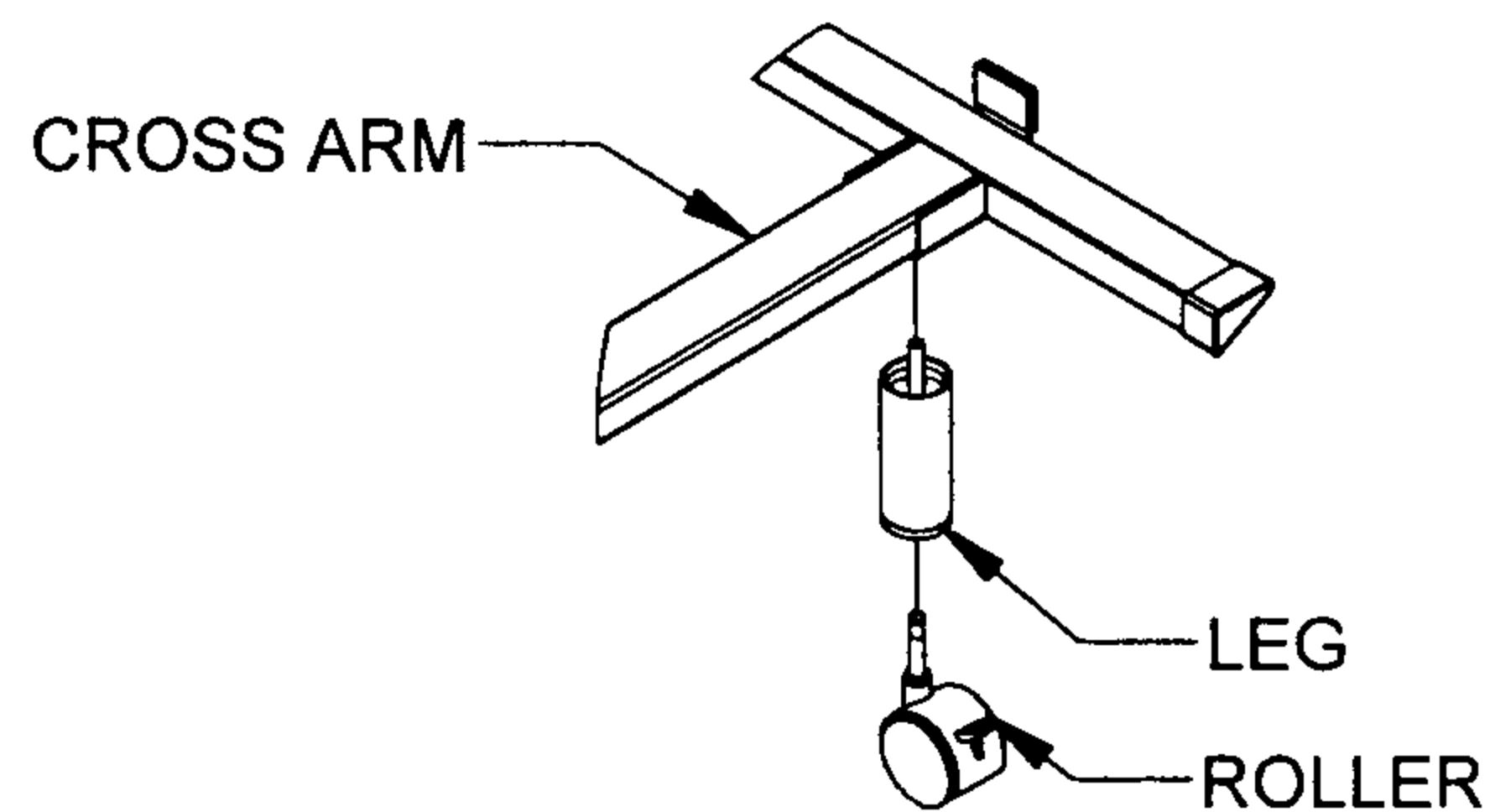
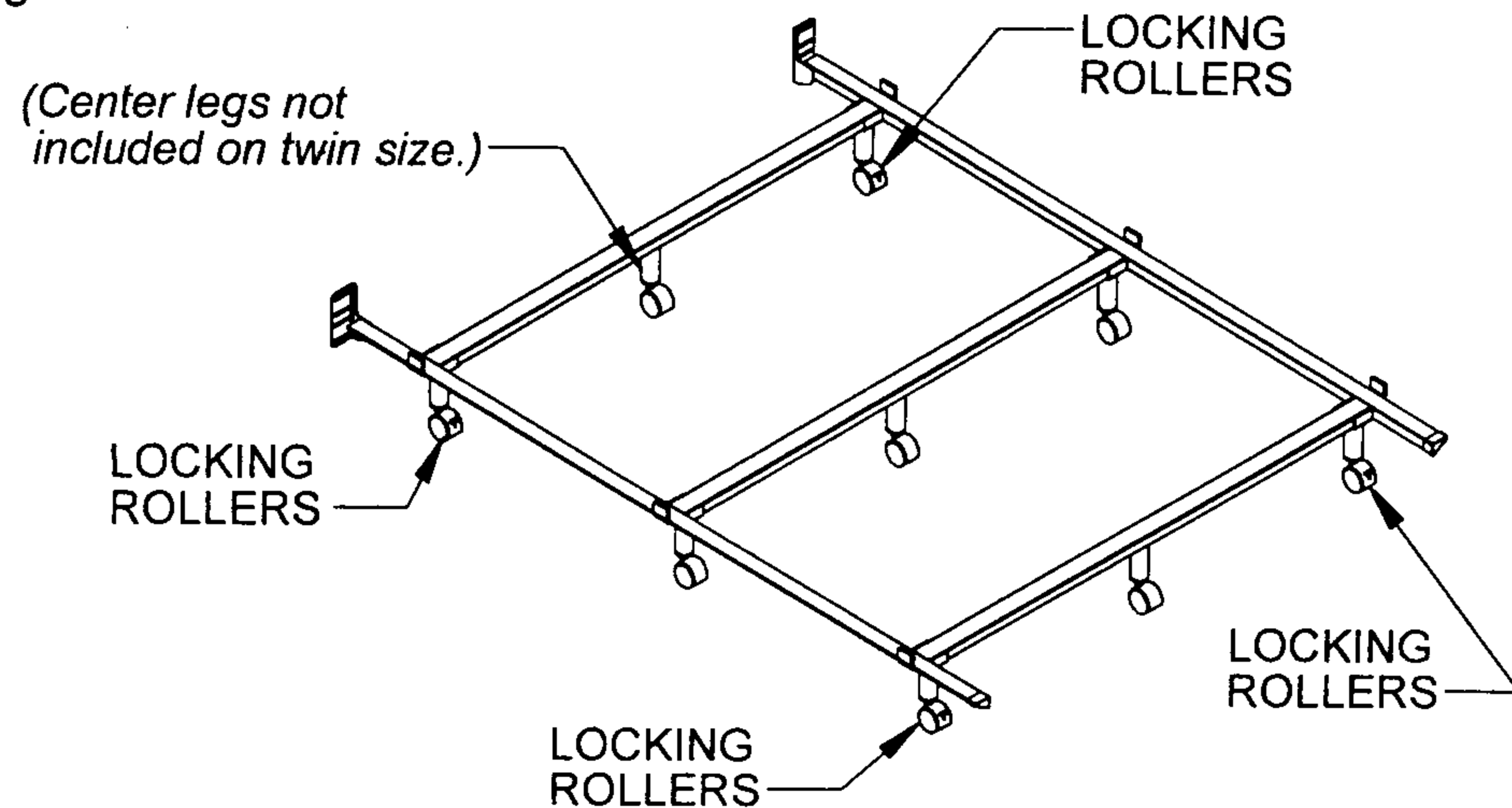


Figure 3



<i>Legg & Platt</i> INCORPORATED	
DATE 6-15-05	DWG NO 99300792
DO NOT SCALE DRAWING SHEET 1 OF 1	