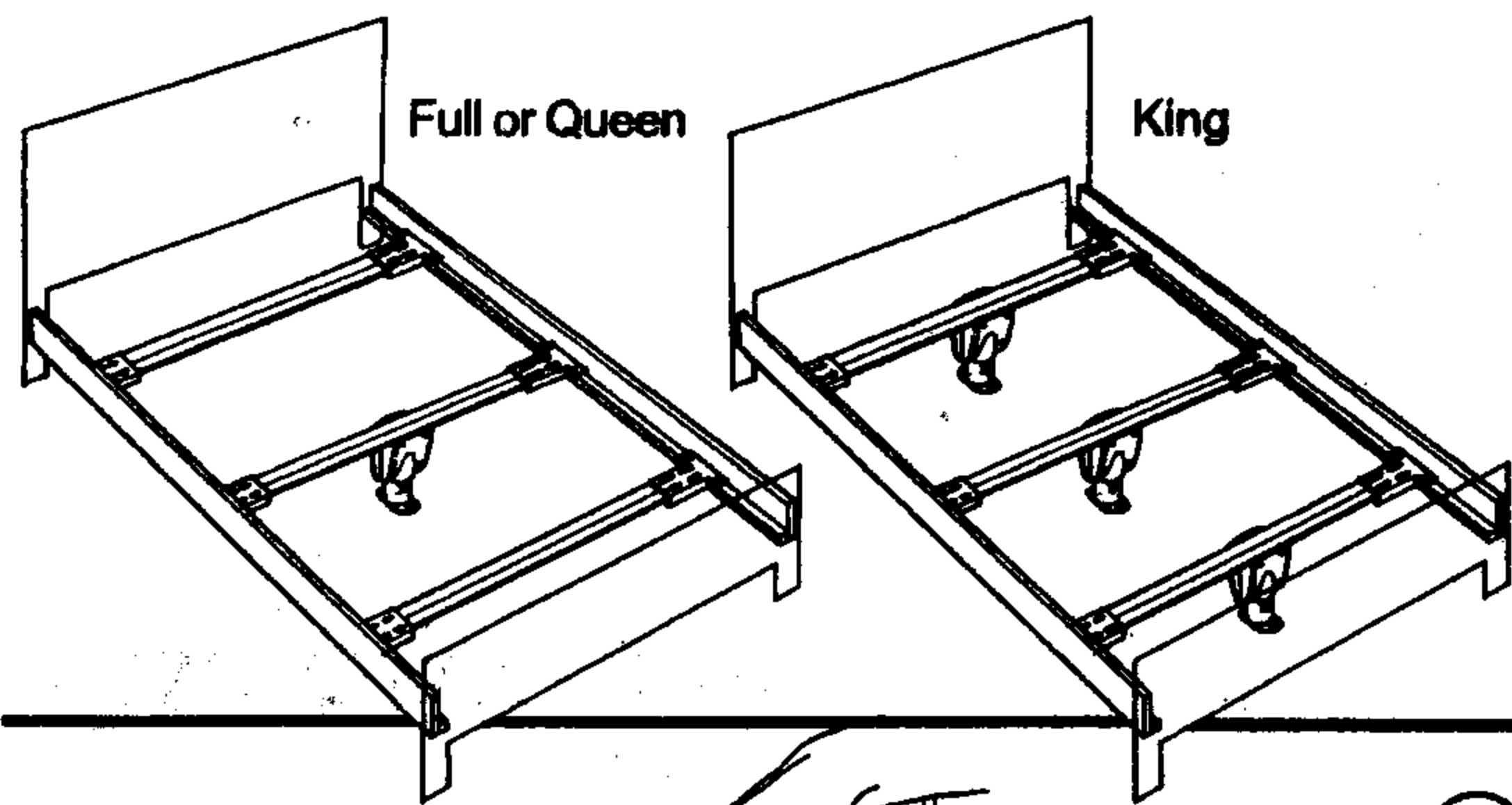


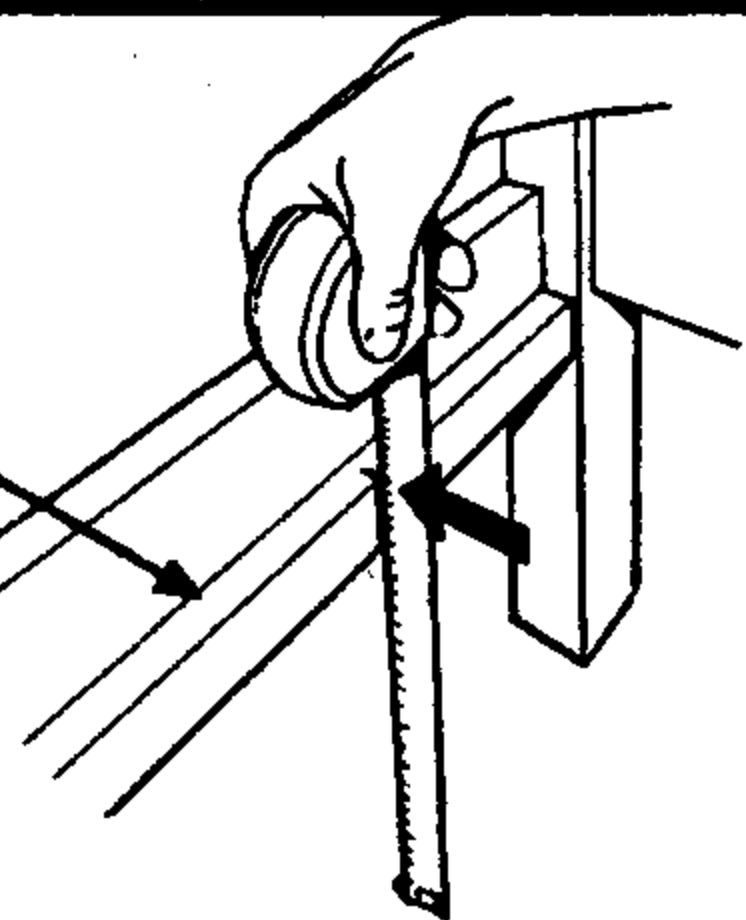
# Installing Bedbeam™ Single Leg Kit to Wood Side Rails with Slat Rail

**Tools Required:** Screwdriver, tape measure, pencil



Measure to top of slat rail.

Steps ① ②



Step ③

Leg Receiver

Contained Leg

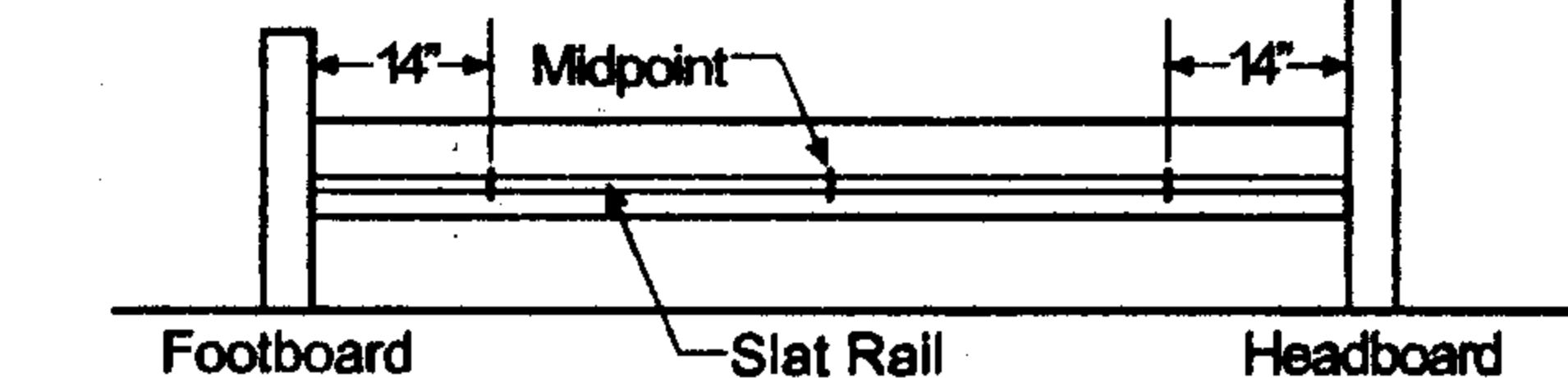
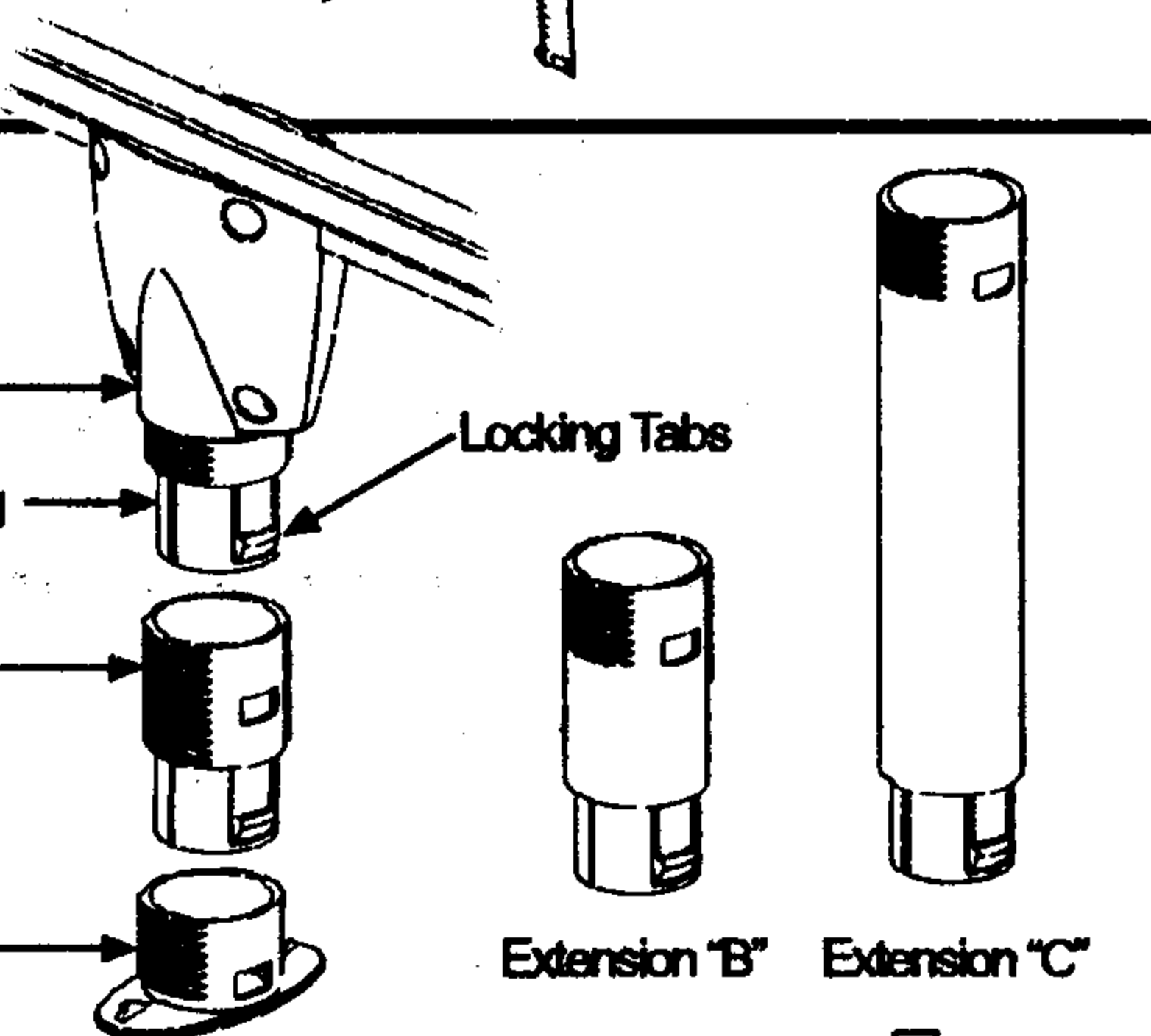
Extension "A"

Foot

Locking Tabs

Extension "B"

Extension "C"



Steps ④ ⑤ ⑥

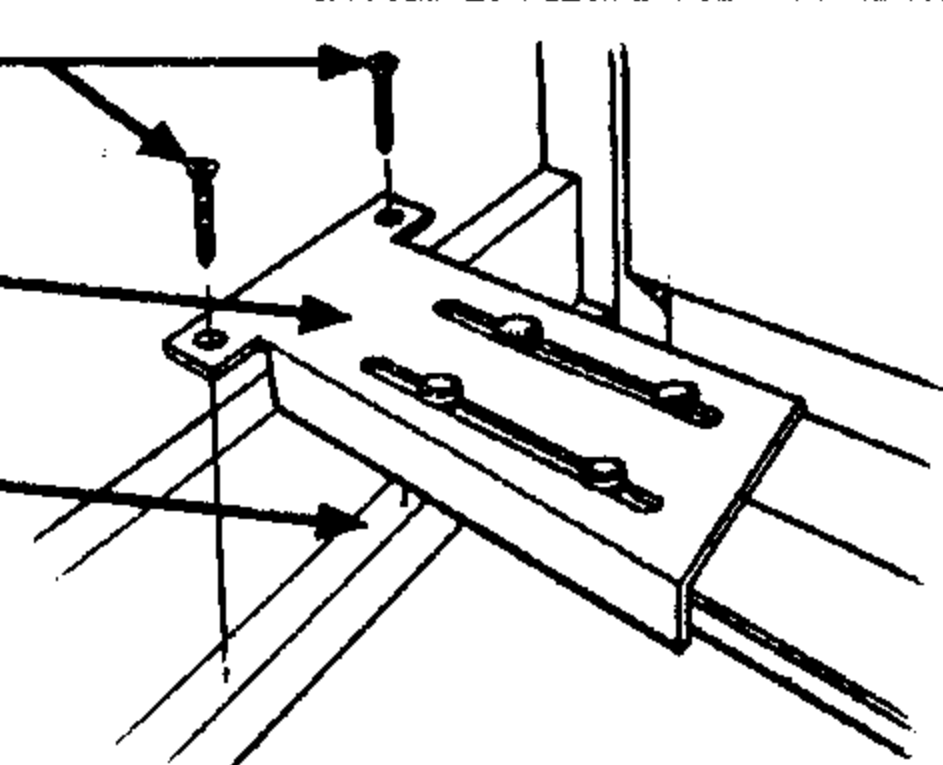
Side View of Bed Frame

Wood Screws

Sliding End Bracket

Slat Rail

Step ⑦



Step ⑧

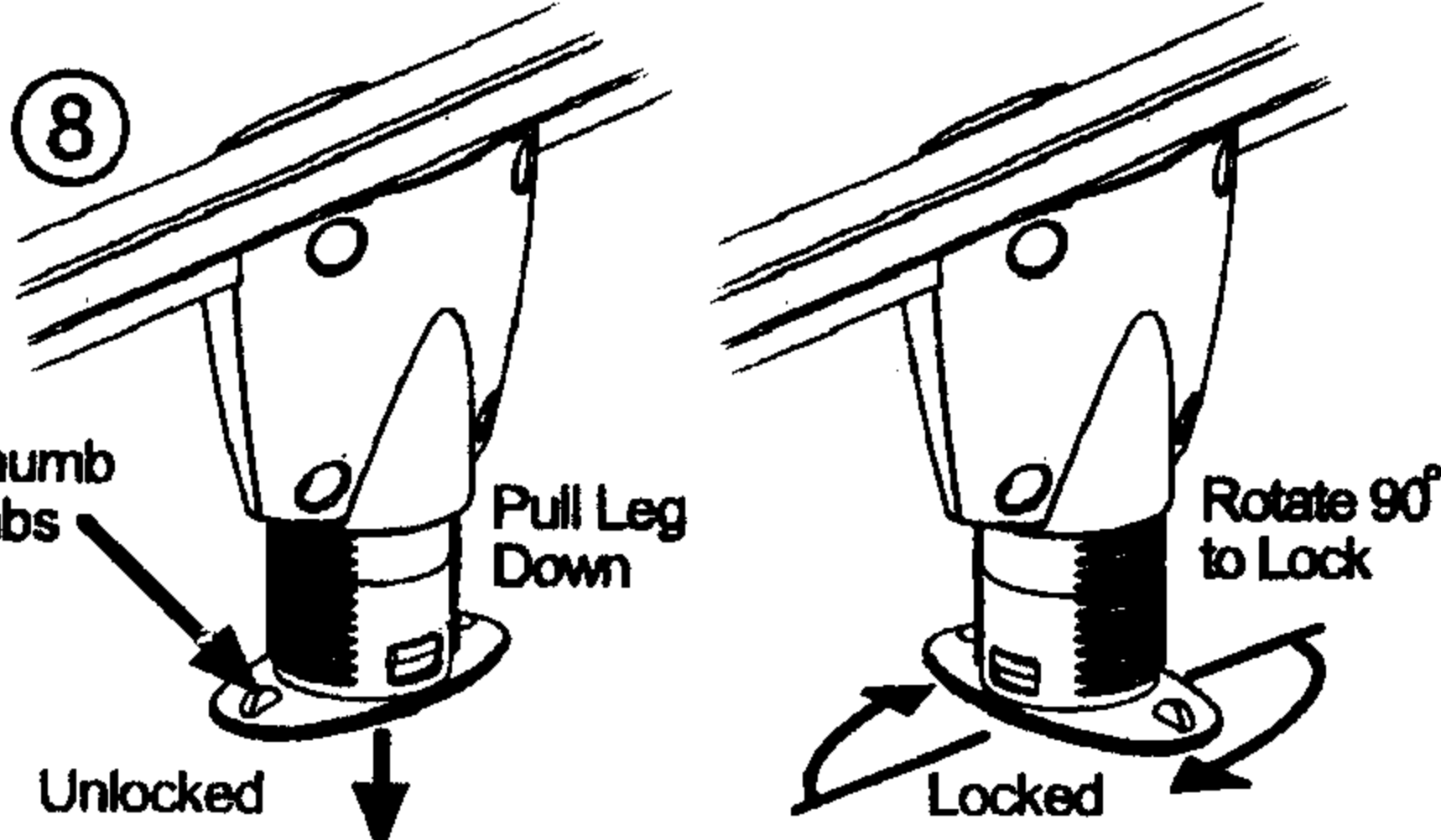
Thumb Tabs

Pull Leg Down

Unlocked

Rotate 90° to Lock

Locked



- ① Measure from floor to the top of the slat rail. Find this measurement on the chart below. Chart indicates proper Leg Extensions to use.
- ② Assemble the appropriate Leg Extension(s) and Foot together. If extensions are needed, first remove foot by pressing in both Locking Tabs and carefully pulling apart.

## LEG LENGTH CHART

| 5" -7"    | 7"-9"                  | 9"-11.5"               | 11.5"-14"                                      | 14"-16"                | 16"-18"  |
|-----------|------------------------|------------------------|--|------------------------|--|
| Foot only | Extension "A" and Foot | Extension "B" and Foot | 1 "A" extension<br>1 "B" extension<br>and Foot | Extension "C" and Foot | 1 "A" extension<br>1 "C" extension<br>and Foot |

Example: 10 1/2" measurement to top of slat rail would use 1 Extension "B" and Foot.

- ③ Unlock leg by turning foot counter-clockwise, then slide the Contained Leg into the Extension / Foot combination until the tabs snap into holes. Slide the entire Leg assembly into the Leg Receiver as far as possible.
- ④ Measure and mark 14" from Headboard along the slat rail on each side.
- ⑤ Measure and mark 14" from Footboard along the slat rail on each side.
- ⑥ Mark the location midway between the Headboard and Footboard on the Slat Rail on each rail.
- ⑦ Arrange Bedbeam™ beams in your kit at locations marked in ④ ⑤ ⑥. If your kit includes 2 End Beams, position them toward Headboard and Footboard with Bedbeam™ Beam in the center.

Extend and attach both Sliding End Brackets onto Slat Rails, spanning from side rail to side rail, centered on each mark. Attach with wood screws provided.

- ⑧ Make sure leg, or legs are in the unlocked position, (see illustration). Pull legs down until they contact the floor. Use the thumb tabs on Foot to rotate Foot/Leg assembly 90 degrees clockwise to lock in position. King set will have three legs to lock.

- ⑨ Foundation and mattress can now be installed onto the Bedbeam™ Bed Support System.

## IMPORTANT:

The Leg must be perpendicular to the floor. Use care when moving the bed, cleaning or placing items under the bed.